

2024 Milling & Paving – Timeline and Summary

The community will be undergoing an asphalt rehabilitation project **beginning November 5th**. This work is necessary to properly maintain the roads within the community. The project will be intrusive and require the use of heavy equipment that will produce loud noise.

We would like to thank you in advance for your cooperation and understanding with regard to this project. The crew performing the work is very helpful but will require your patience so that they can get the job done as seamlessly and as quickly as possible.

- **All vehicles must be moved prior to 7am from affected streets and parking spaces.** This includes removing vehicles from garages on affected streets if access to the vehicle is needed prior to completion of the project and “drying” time. You will be able to access your homes at all times during the project by foot. ***Note: Any vehicle left on an affected street or parking space will be towed to a nearby street that is not being paved.**
- **Please mark any invisible fencing or sprinkler heads near the work area.** ***Note: South Riding Proprietary is not responsible for any breakage or displacement of items installed within easement areas.**
- **Residents must stay off new pavement for 24 hours.** Driving or walking on new pavement prior to allowing 24 hours to “dry”, may result in transfer of paving materials to tires, or footwear which may transfer to additional surfaces causing damage (i.e. vehicles, garage floors, clothing, etc.) ***Note: South Riding Proprietary is not responsible for damage due to material transfer.**
- **“Pardon our Dust”** The entire project process will create dust and will be a dirty process – It is advisable to keep your windows closed, cars parked away from work areas especially if you are sensitive to the dust and noise. Dominion nor South Riding Proprietary will be responsible for cleaning the interior of homes, garages or providing car washes due to dust caused from construction.

In the event weather conditions delay this project, please check back for updates. If you have any questions or concerns, please contact the Proprietary at **townhall@southriding.net** or **703-327-4390 x110**.

PHASE 1
11/5/2024: MILLING
11/6/2024: PAVING
ALL CARS OUT BY 7:00AM EACH DAY

MEADOWS POOL LOT

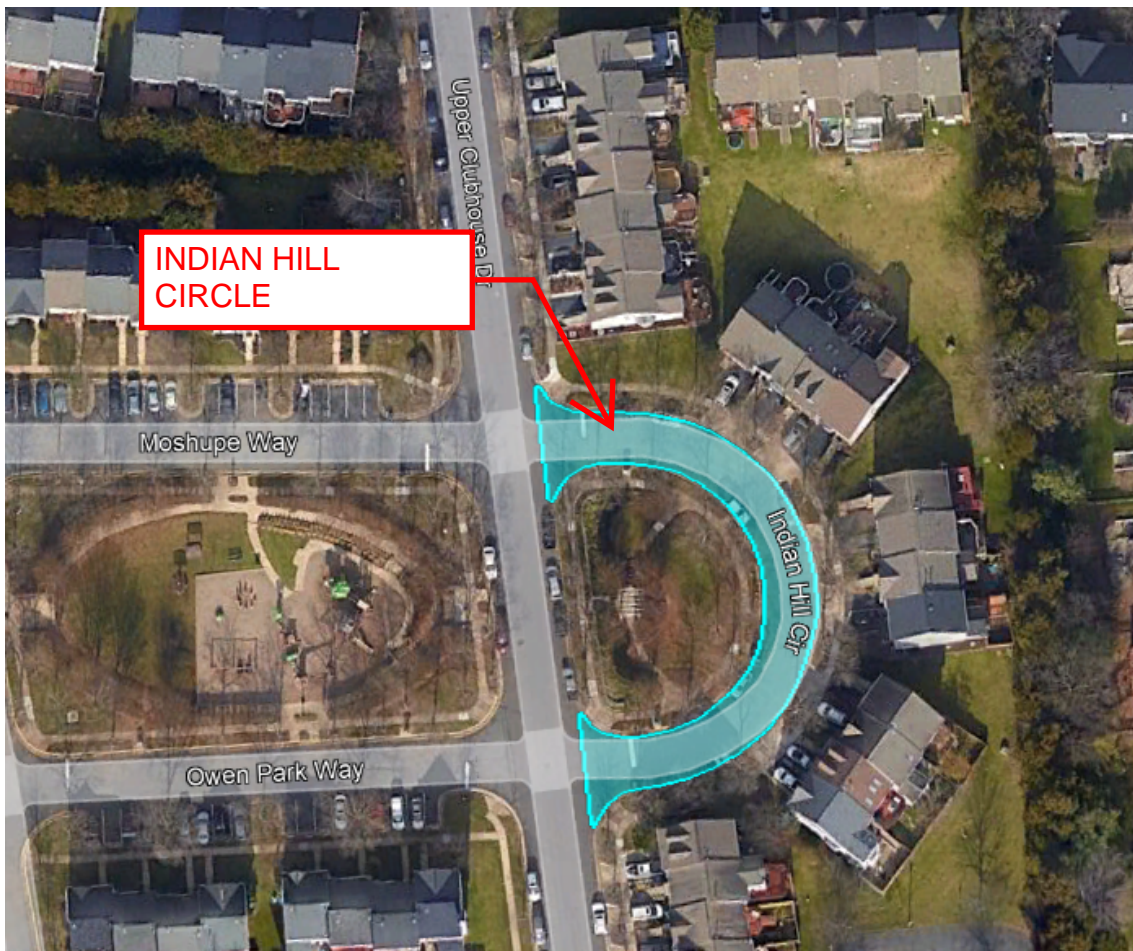
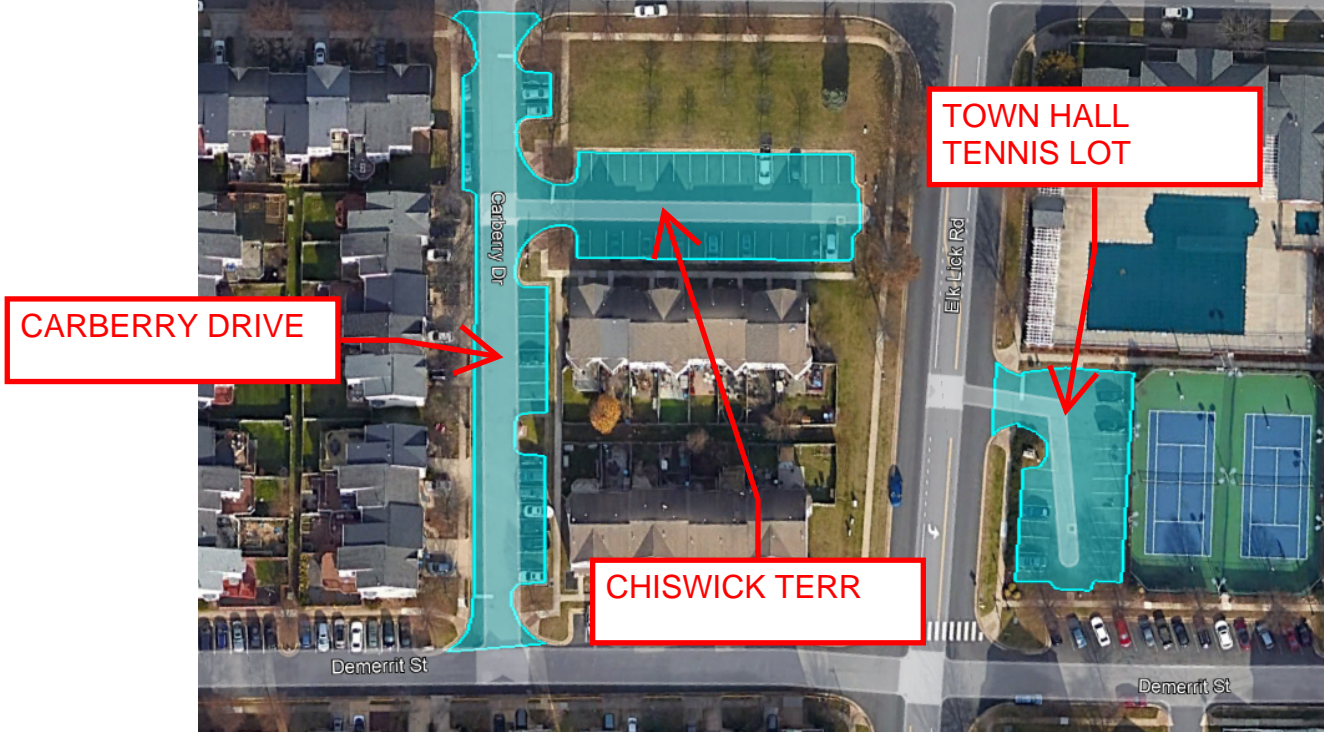


BRASS ALLEY

PHASE 1
11/5/2024: MILLING
11/6/2024: PAVING
ALL CARS OUT BY 7:00AM EACH DAY



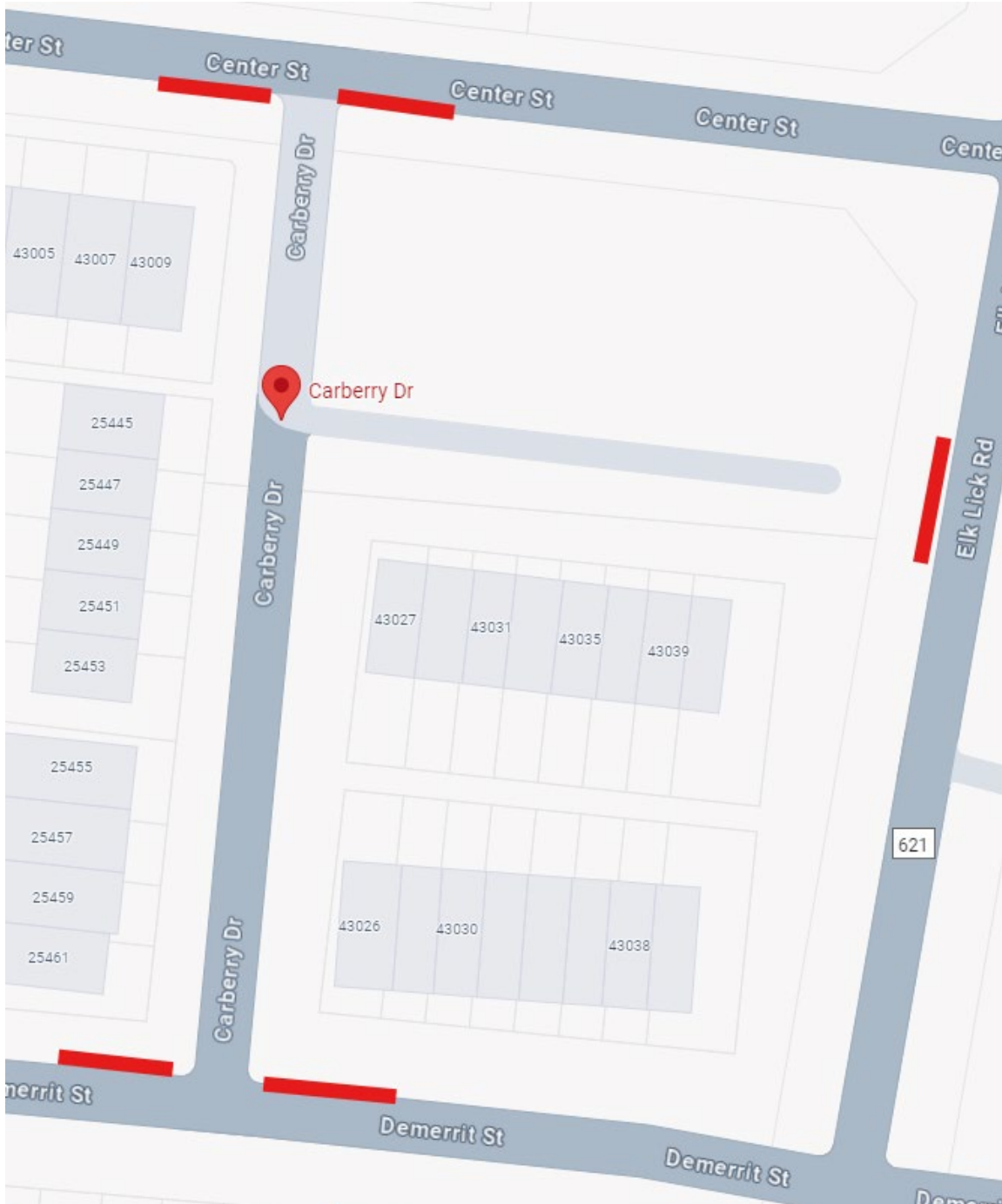
PHASE 2
11/11/2024: MILLING
11/12/2024: PAVING
ALL CARS OUT BY 7:00AM EACH DAY



Monday, November 11th, 2024

Trash pick-up map: Carberry Drive

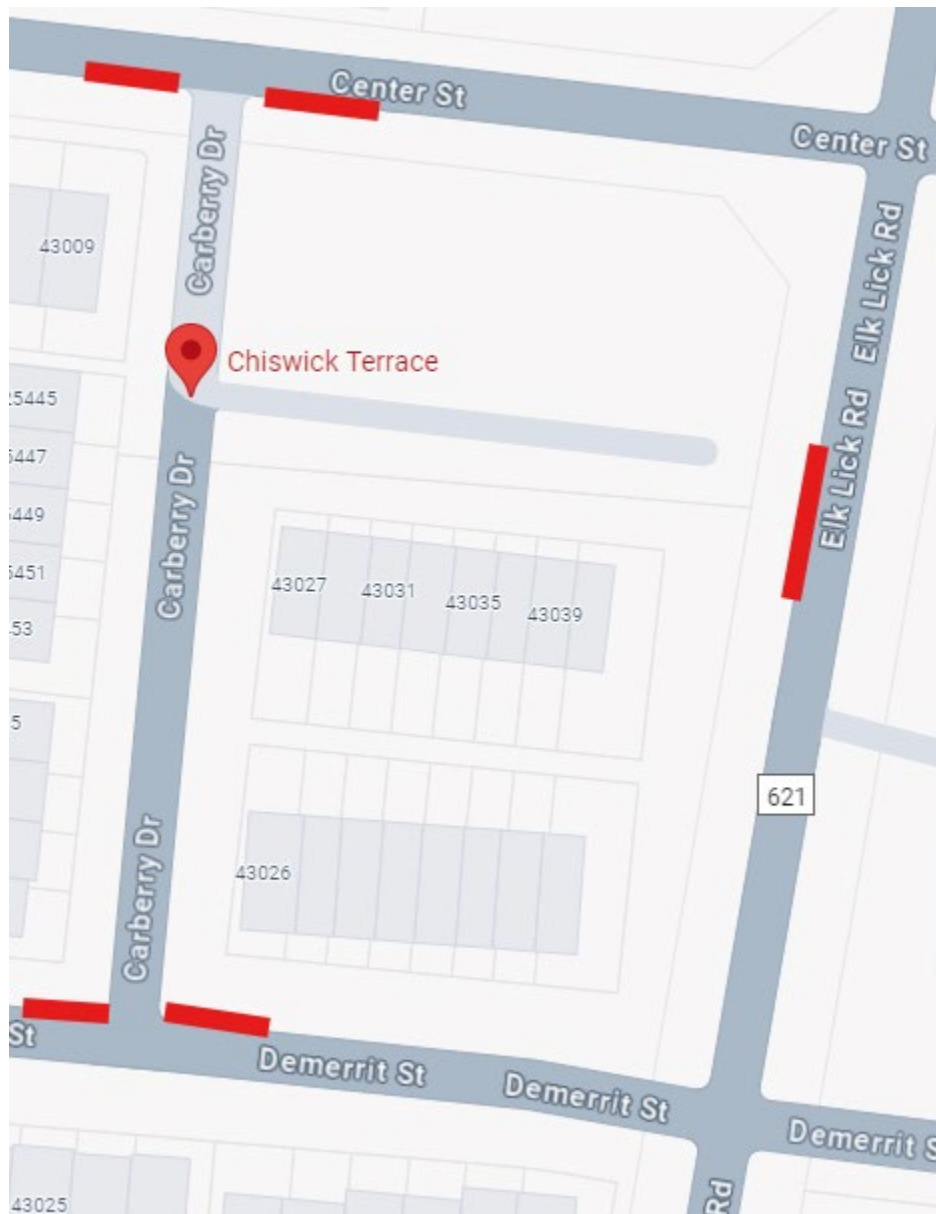
Trash pick-up day affected homes may place garbage cans out **on Center Street, Demerit Street, and at the end of the sidewalk on Elk Lick Road** for collection.



Monday, November 11, 2024

Trash pick-up map: Chiswick Terrace

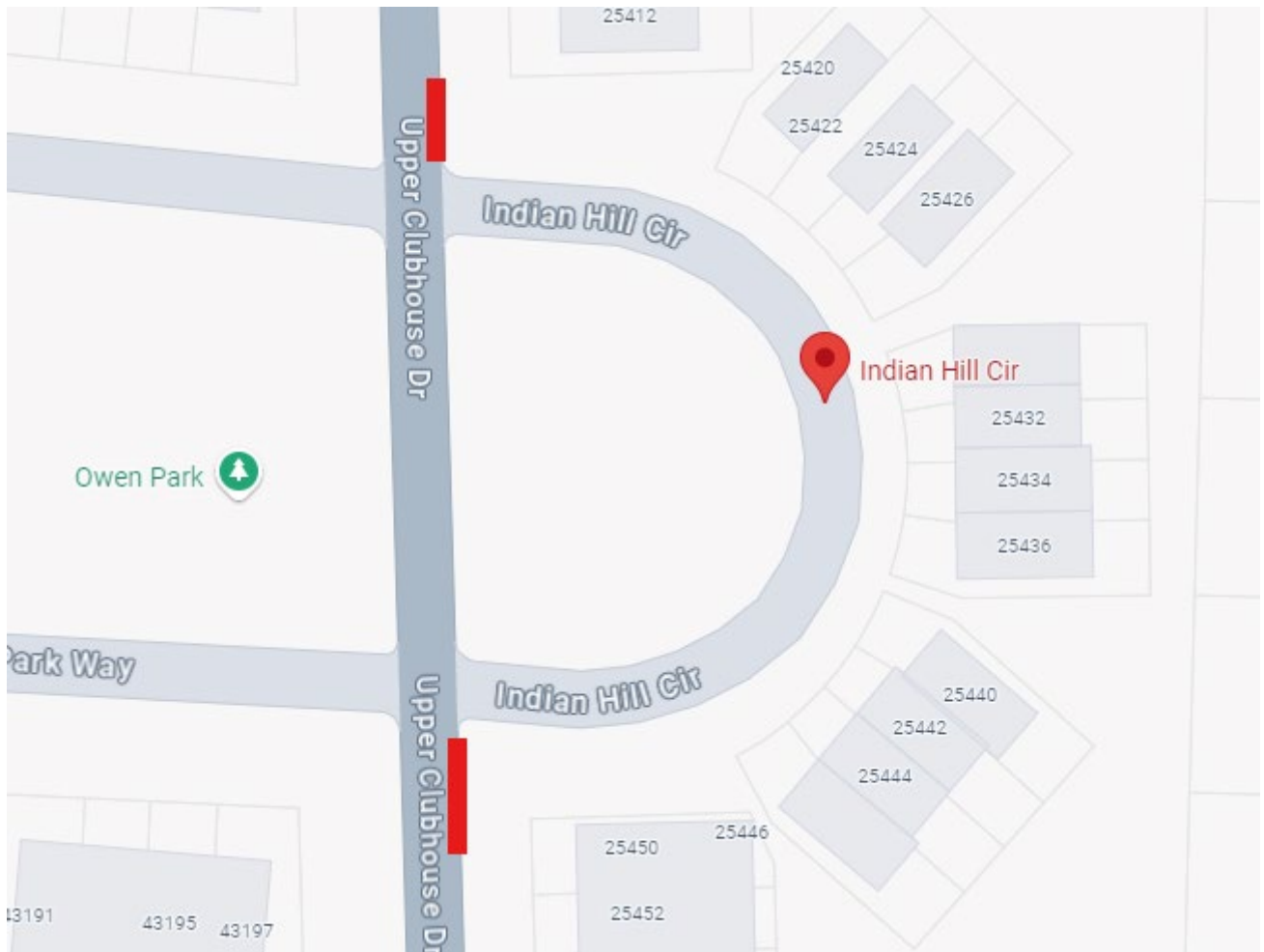
Trash pick-up day affected homes may place garbage cans out on **Center Street, Demerrit Street, and at the end of the sidewalk on Elk Lick Road** for collection.



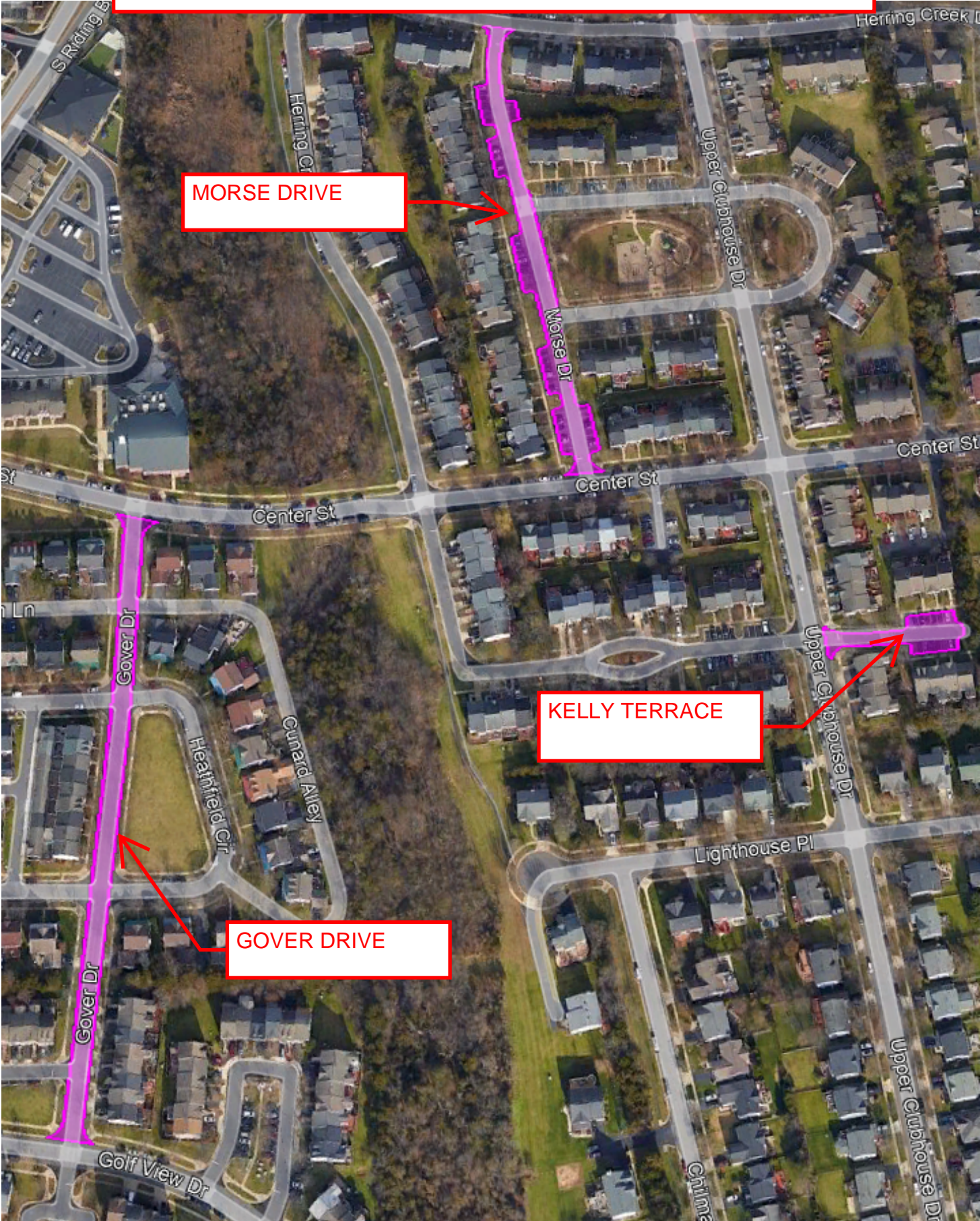
Monday, November 11, 2024

Trash pick-up map: Indian Hill Circle

Trash pick-up day affected homes may place garbage cans out on **Upper Clubhouse Drive** for collection.



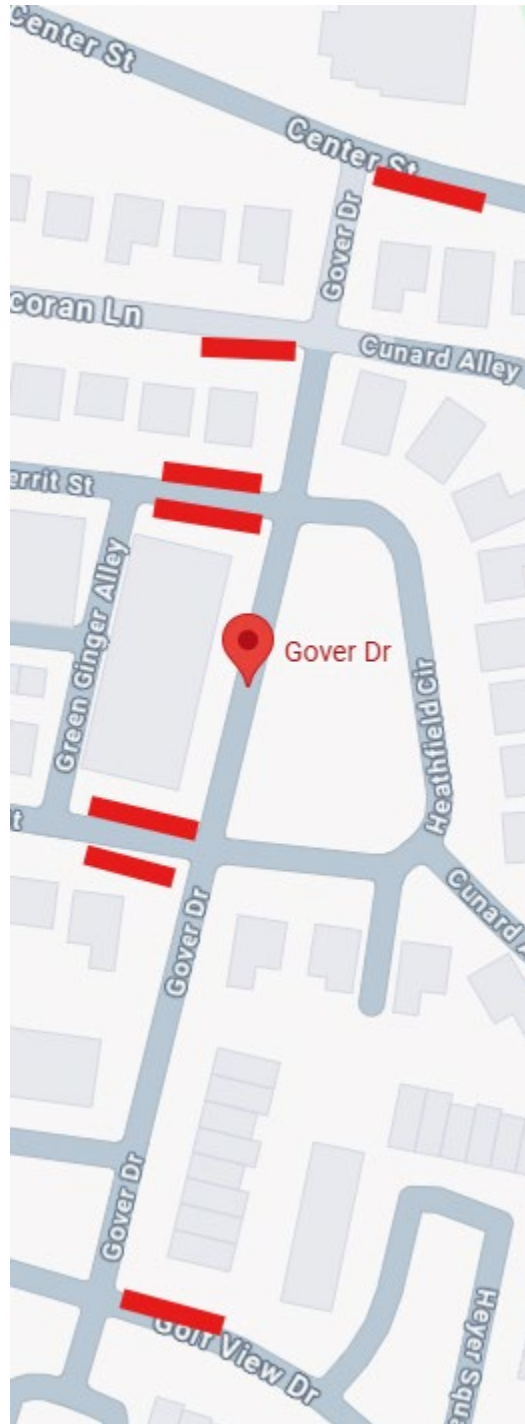
PHASE 3
11/13/2024: MILLING
11/14/2024: PAVING
ALL CARS OUT BY 7:00AM EACH DAY



Thursday, November 14th, 2024

Trash pick-up map: Gover Drive

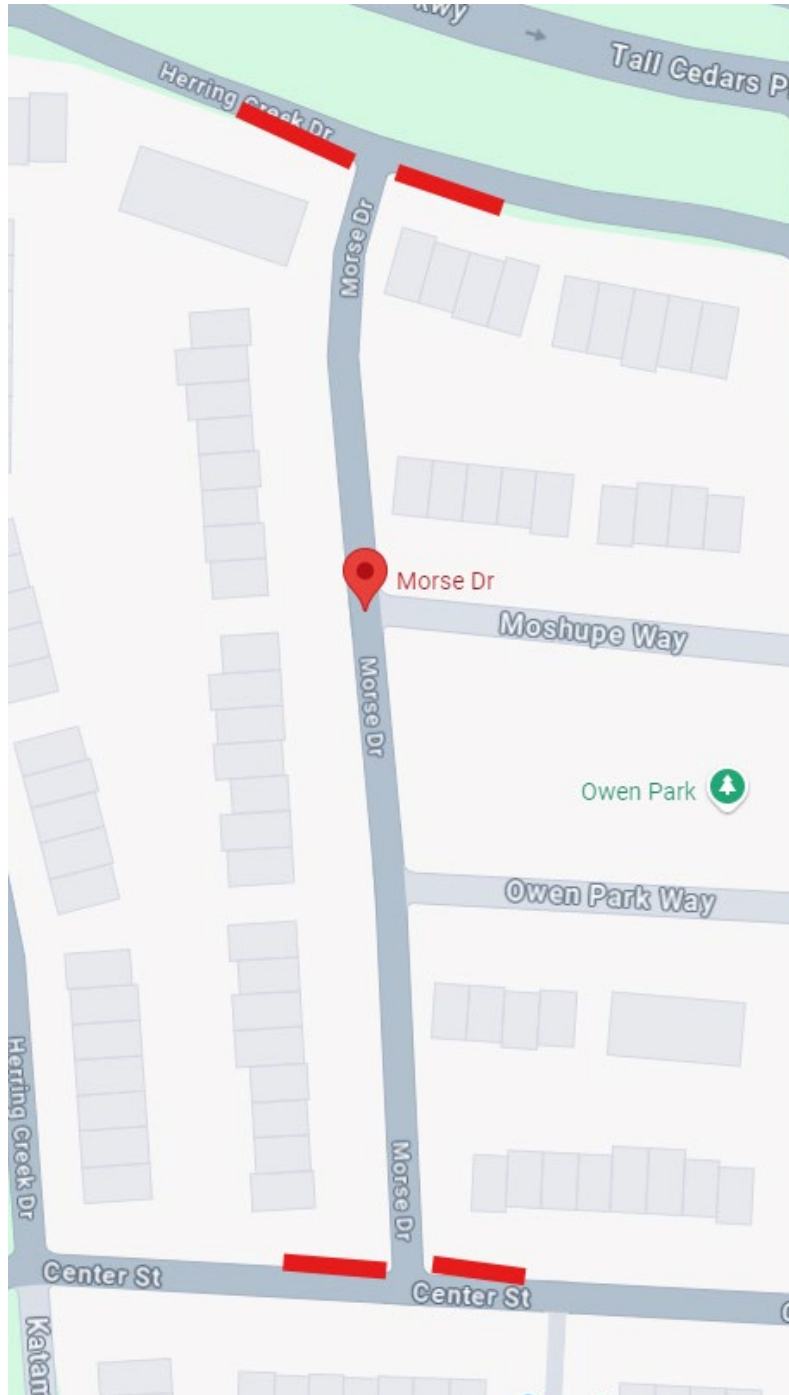
Trash pick-up day affected homes may place garbage cans out on **Center Street, Cocoran Lane, Demeritt Street, Eustis Street, and Golf View Drive** for collection.



Thursday, November 14th, 2024

Trash pick-up map: Morse Drive

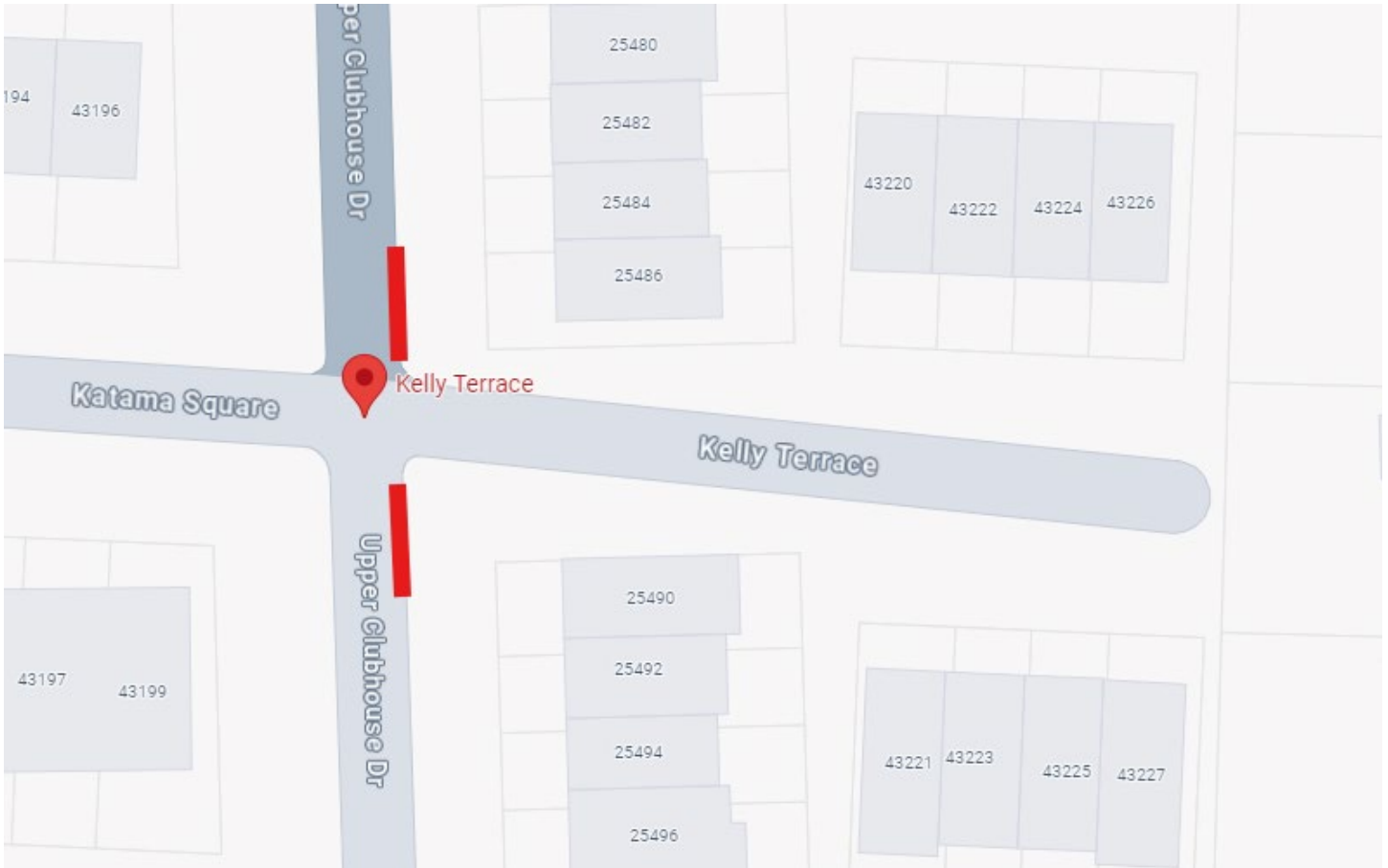
Trash pick-up day affected homes may place garbage cans out on **Herring Creek Drive and Center Street** for collection.



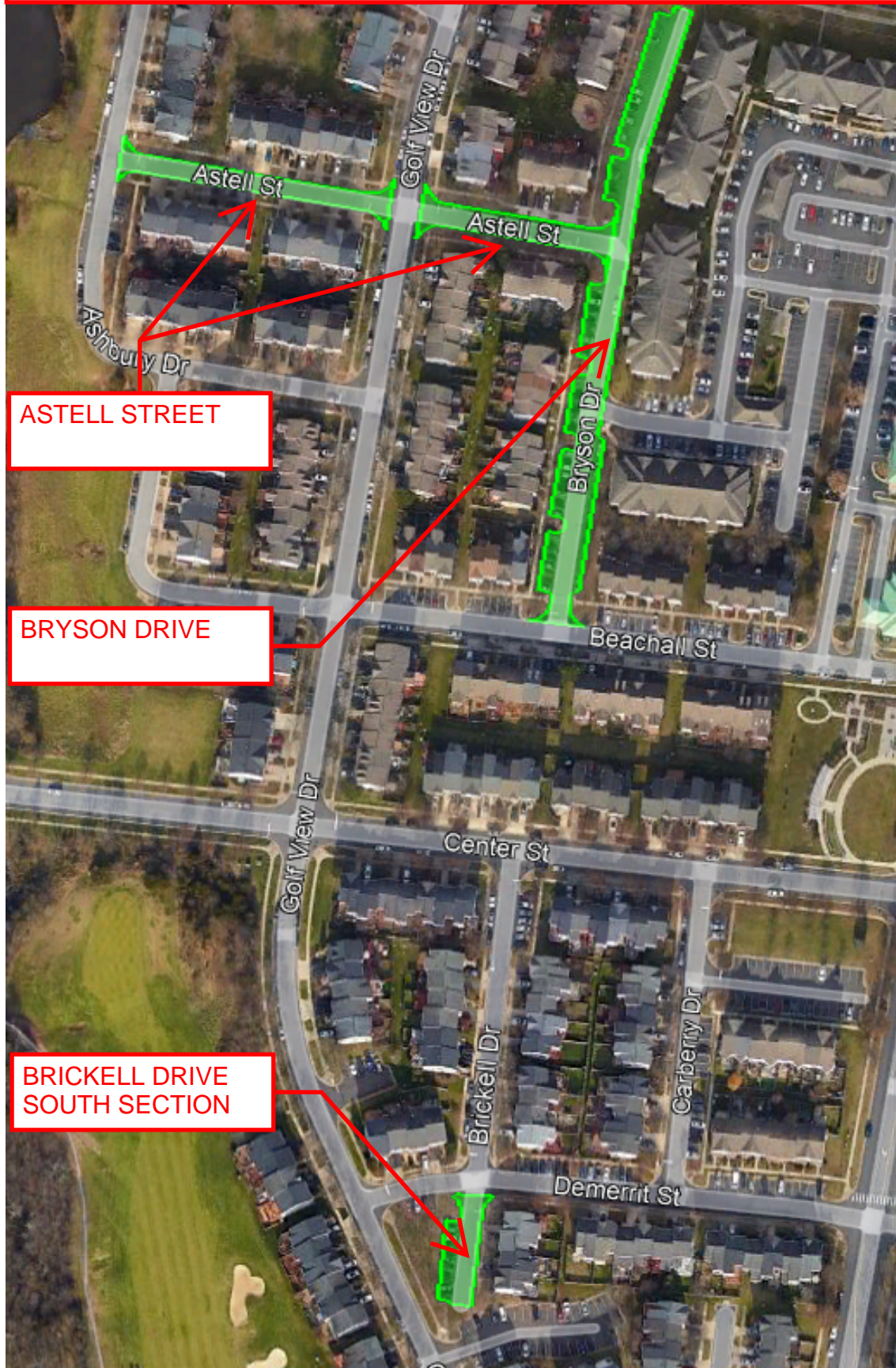
Thursday, November 14th, 2024

Trash pick-up map: Kelly Terrace

Trash pick-up day affected homes may place garbage cans out on **Upper Clubhouse Drive** for collection.



PHASE 4
11/18/2024: MILLING
11/19/2024: PAVING
ALL CARS OUT BY 7:00AM EACH DAY



ASTELL STREET

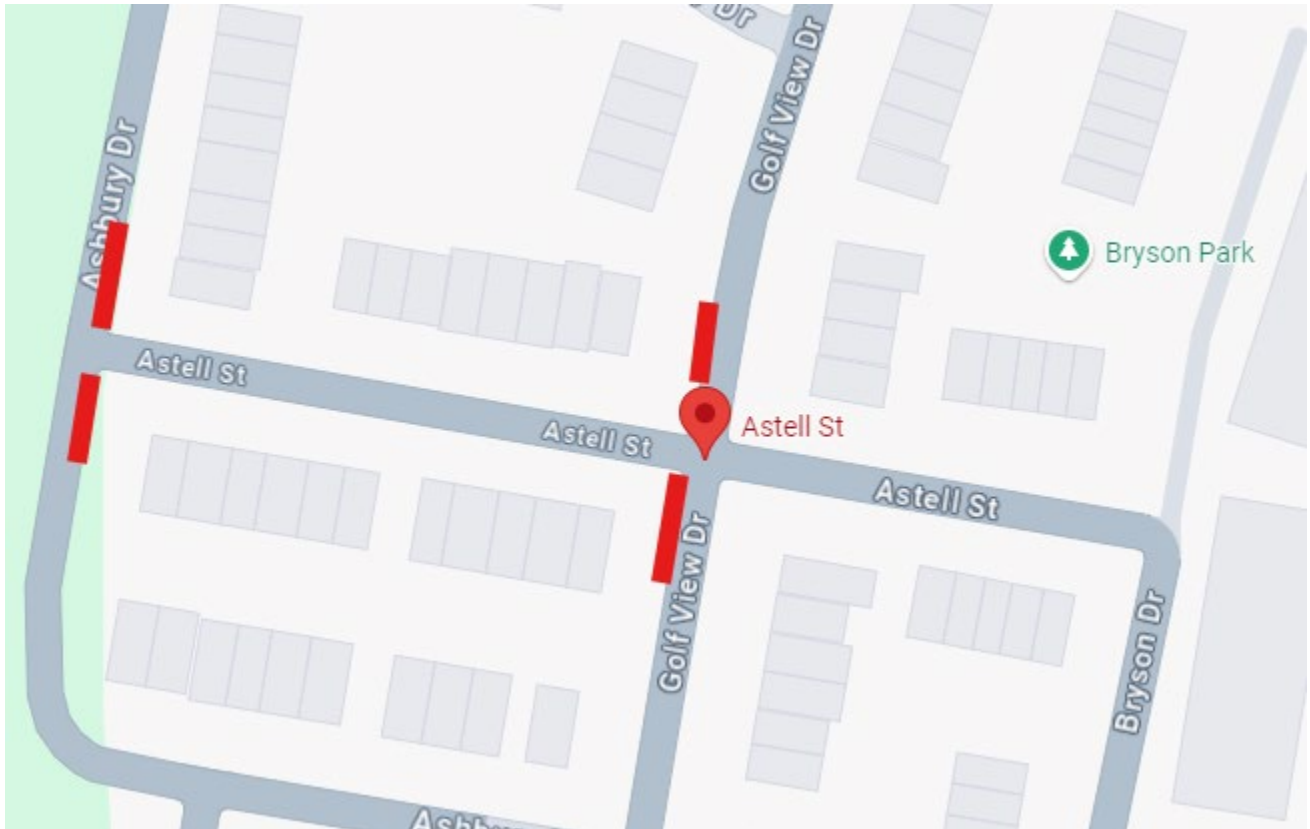
BRYSON DRIVE

**BRICKELL DRIVE
SOUTH SECTION**

Monday, November 18th, 2024

Trash pick-up map: Astell Street

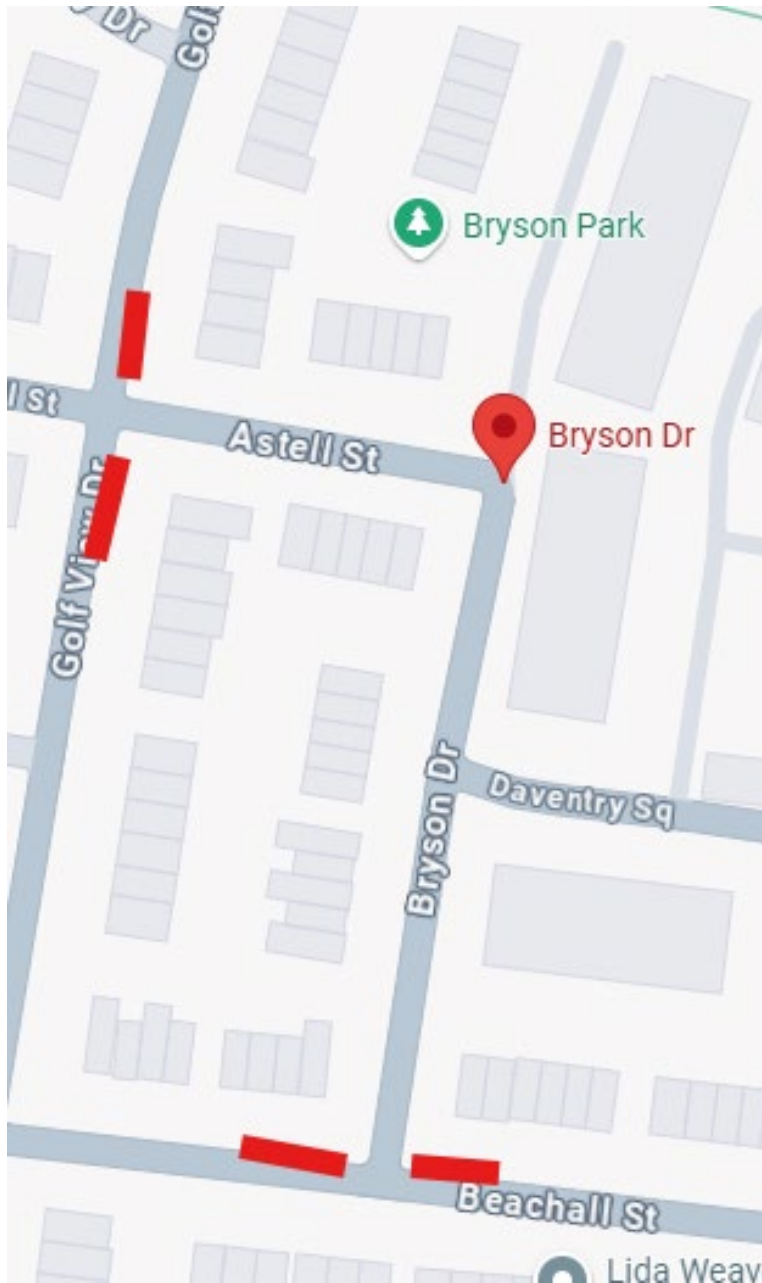
Trash pick-up day affected homes may place garbage cans out on **Ashbury Drive and Golf View Drive** for collection.



Monday, November 18th, 2024

Trash pick-up map: Astell Street & Bryson Drive

Trash pick-up day affected homes may place garbage cans out on **Golf View Drive and Beachall Street** for collection.



Monday, November 18th, 2024

Trash pick-up map: Brickell Drive

Trash pick-up day affected homes may place garbage cans out on **Center Street and Demeritt Street** for collection.

